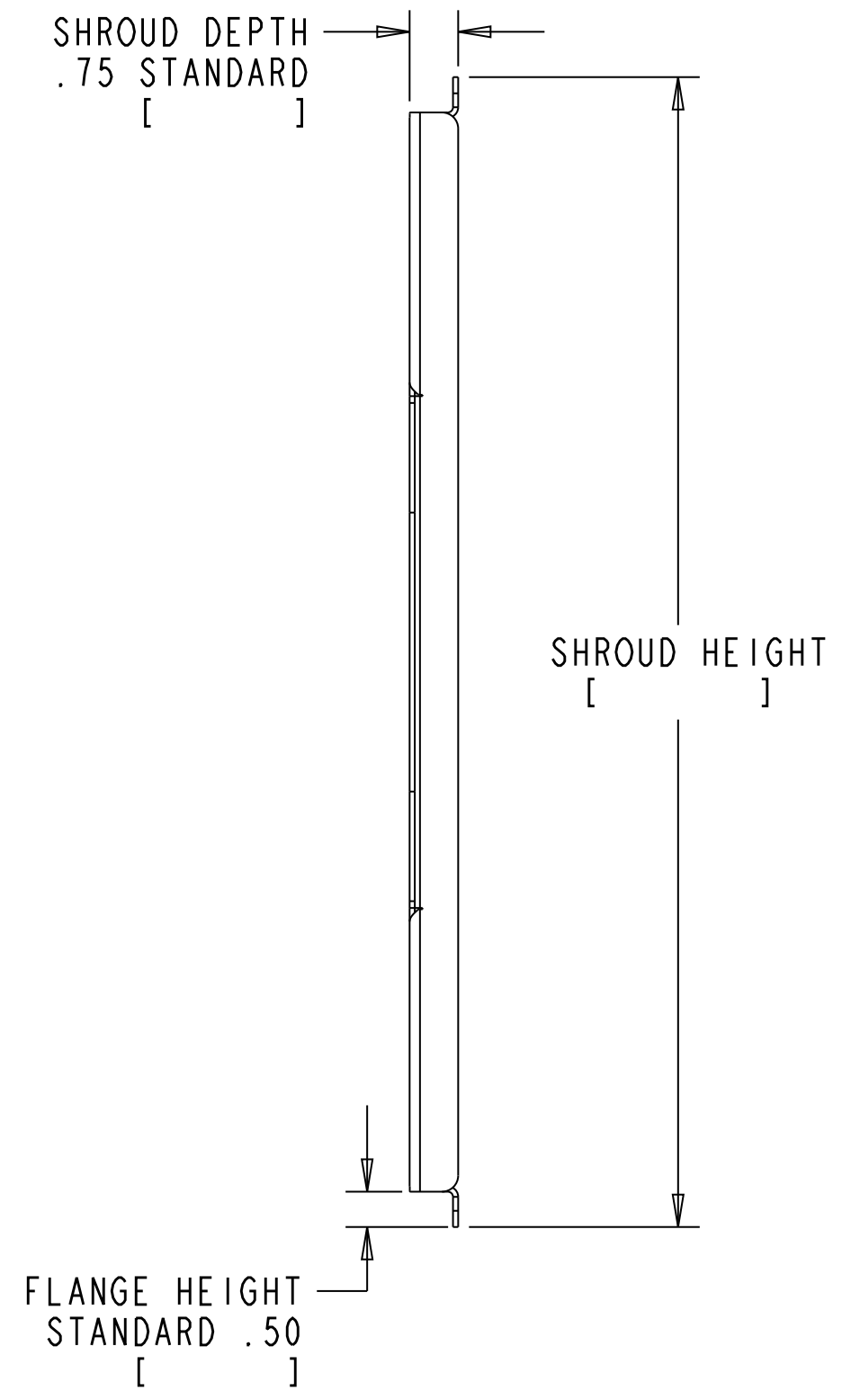
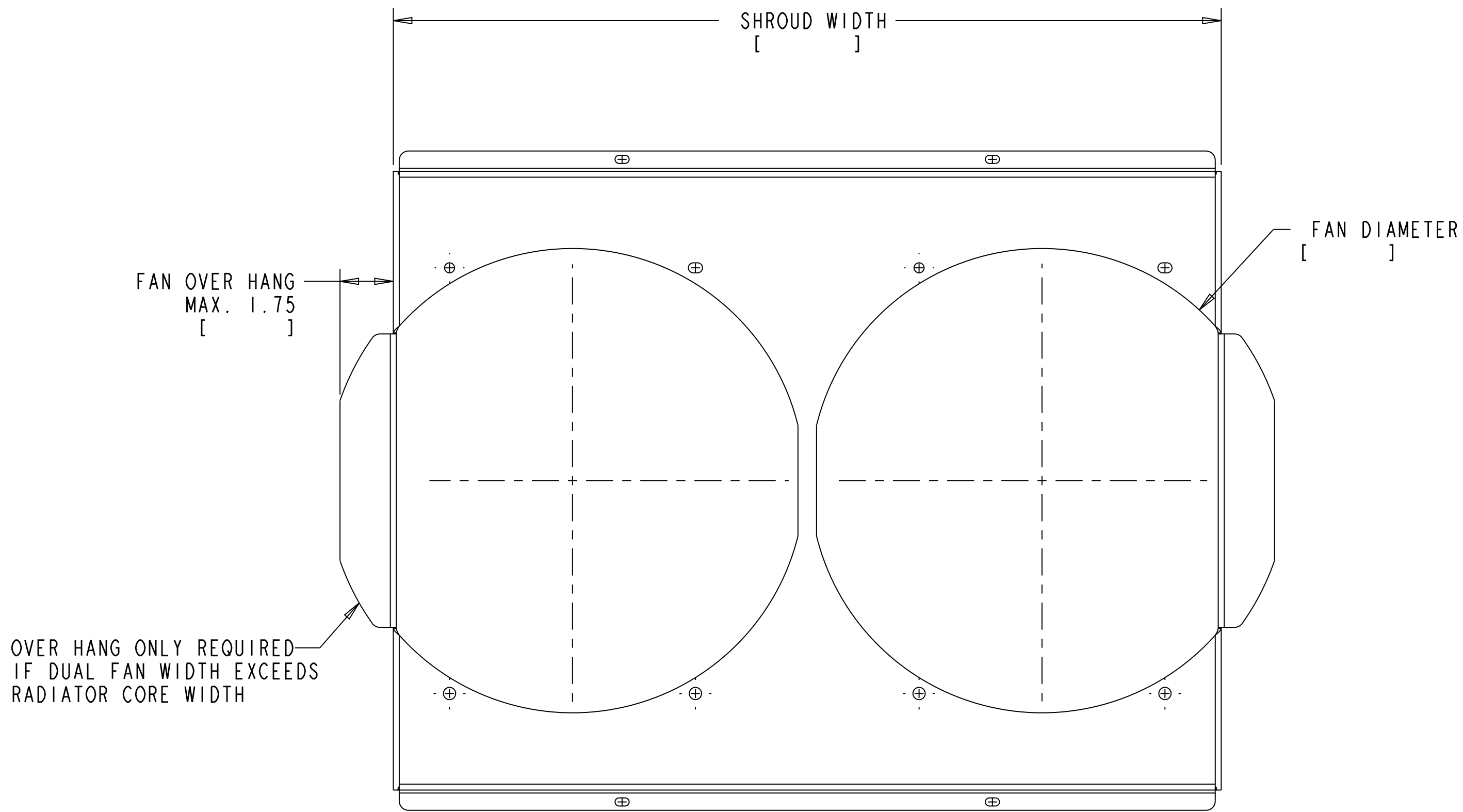
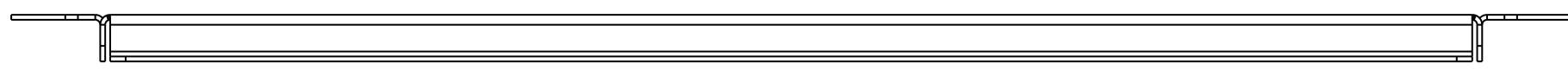


OTHER FABRICATION NOTES IF NEEDED



OVER HANG ONLY REQUIRED IF DUAL FAN WIDTH EXCEEDS RADIATOR CORE WIDTH



- FAN SHROUD GUIDELINES:
- 1) ALL DUAL SHROUDS WILL BE BOXED, NOT TAPERED
 - 2) STANDARD SHROUD DEPTH .75"
 - 3) STANDARD FLANGE HEIGHT .50"
 - 4) ALL FAN PIG TAILS WILL BE PLACED TOWARDS THE BOTTOM OF THE RADIATOR
 - 5) MAXIMUM FAN OVERHANG IS 1.75" EACH
 - 6) DUAL 16" FANS MINIMUM RADIATOR HEADER TO HEADER WIDTH 28"
 - 7) DUAL 14" FANS MINIMUM RADIATOR HEADER TO HEADER WIDTH 25.40"
 - 8) DUAL 12" FANS MINIMUM RADIATOR HEADER TO HEADER WIDTH 21.54"
 - 9) DUAL 10" FANS MINIMUM RADIATOR HEADER TO HEADER WIDTH 17.60"

80110FSD CUSTOM DUAL SHROUD

CUSTOMER AND CAR INFORMATION

CUSTOMER NAME	VEHICLE MAKE
PHONE #	VEHICLE MODEL
ACCOUNT #	VEHICLE YEAR
INVOICE #	ENGINE SIZE

FUTURE SHIP DATE

RELEASE EARLY GEN. TOL.

SEE SALES PRIOR TO RELEASE



CUSTOMER SIGNATURE

SALES

ENGINEERING

DRAWN BY: DATE
 CHECKED BY: DATE
 WEIGHT:

TITLE
 MATERIAL
 ENG. NUMBER
 SIZE SCALE SHEET REV.